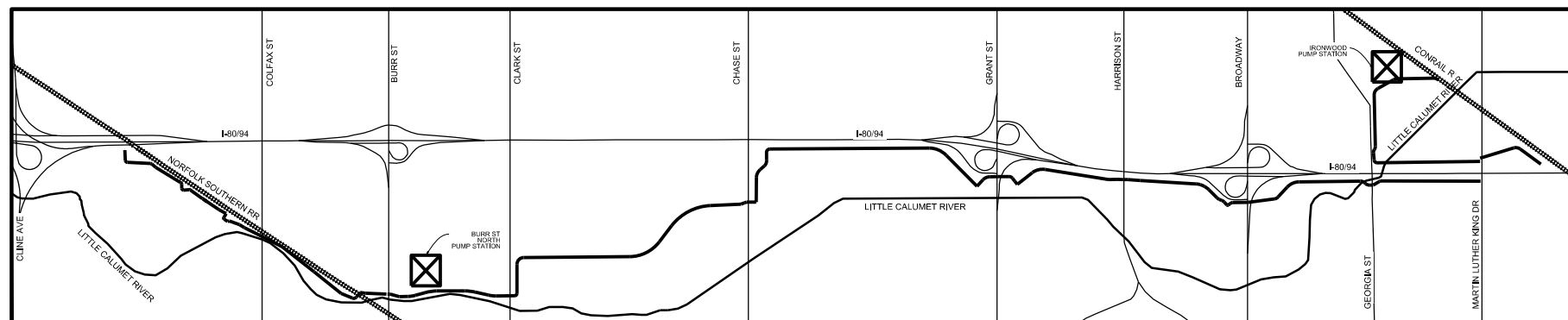


LITTLE CALUMET RIVER BASIN DEVELOPMENT
COMMISSION MEMBERS

- WILLIAM BAKER, Chairman
- TOM WICHLINSKI, Vice Chairman
- THOMAS GOZDECKI, Treasurer
- LEVON WHITTAKER, Secretary
- ANTHONY BROADNAX, Member
- DAVID CASTELLANOS, Member
- DEREK NIMETZ, DNR Representative
- RONALD WARE, JR., Member
- ROBERT OCHI, Member
- DANIEL REPAY, Executive Director
- DAVID WICKLAND, Commission Attorney

Gary North Levee Culvert and I-Wall Maintenance

Gary, Indiana



☒ = PUMP STATIONS



Little Calumet River
Basin Development
Commission

900 Ridge Road, Suite H
Munster, IN 46321

REVISION	DESCRIPTION	DATE

PRELIMINARY

Title Sheet

**Gary North Levee
Culvert Maintenance**



**Know what's below.
Call before you dig.**

INDIANA DEPARTMENT OF TRANSPORTATION
CURRENT STANDARD SPECIFICATIONS & DETAIL
STANDARDS ARE TO BE USED WITH THESE PLANS

SEPTEMBER 2024

UTILITIES

<p>GAS AND ELECTRIC N.I.P.S.Co. 1460 E. 15TH AVENUE GARY, IN 46402 219-886-5671</p> <p>TELEPHONE AT&T 302 SOUTH EAST STREET CROWN POINT, IN 46307 219-662-4400</p> <p>CABLE T.V. COMCAST 844 - 169TH STREET HAMMOND, IN 46324 866-594-1234</p>	<p>SEWER GARY SANITARY DISTRICT 3600 WEST 3RD AVENUE GARY, IN 46406 219-944-0595</p> <p>WATER INDIANA AMERICAN WATER 650 MADISON STREET, P.O. BOX 64486 GARY, IN 46401 219-880-2331</p> <p>GARY PUBLIC WORKS & SAFETY 401 BROADWAY ST., SUITE 300 GARY, IN 46402 219-881-1310</p>	<p>ALL OTHER UTILITIES INDIANA UNDERGROUND PLANT PROTECTION SERVICE 1-800-382-5544</p>
---	--	---

INDEX

1	TITLE SHEET	9	STA. 91+00 - 98+30 LINE "B"
2	INFORMATION SHEET	10	STA. 10+00 - 18+00 LINE "C"
3	STA. 10+00 - 21+00 LINE "A"	11	STA. 68+00 - 76+00 LINE "C"
4	STA. 21+00 - 31+00 LINE "A"	12	STA. 10+00 - 21+00 LINE "D"
5	STA. 41+00 - 50+00 LINE "A"	13	STA. 32+00 - 42+00 LINE "E"
6	STA. 60+00 - 69+00 LINE "A"	14	STA. 32+00 - 40+00 LINE "F"
7	STA. 69+00 - 79+00 LINE "A"		
8	STA. 10+00 - 19+00 LINE "B"		

GENERAL NOTES

1	NO CONSTRUCTION IS TO TAKE PLACE BEYOND THE EXISTING RIGHT-OF-WAY, UNLESS OTHERWISE INDICATED.
2	THIS SET OF PLANS SHALL NOT BE CONSTRUED TO BE A PROPERTY RETRACEMENT SURVEY. WHERE APPARENT PROPERTY LINE, AND CORNER INFORMATION IS SHOWN, IT IS BASED ON PHYSICAL EVIDENCE OR TESTIMONY.
3	THE CONTRACTOR SHALL MAINTAIN ALL EXISTING UTILITIES AND SERVICE CONNECTIONS.
4	ALL UTILITIES SHALL BE FIELD VERIFIED BY THE CONTRACTOR. UTILITY LOCATIONS SHOWN ON THE DRAWINGS ARE APPROXIMATE.
5	INDIANA DEPARTMENT OF TRANSPORTATION ROAD STANDARDS CURRENT AT THE TIME OF BID WILL GOVERN AS THE PROJECT ROAD STANDARDS, UNLESS OTHERWISE NOTED.
6	ALL REGULATORY AND CONSTRUCTION MAINTENANCE SIGNS SHALL BE MAINTAINED DURING ALL PHASES OF CONSTRUCTION.
7	THE CONTRACTOR SHALL CONDUCT A SEARCH FOR PROPERTY CORNER MONUMENTS PRIOR TO CONSTRUCTION. ALL MONUMENTS FOUND SHALL BE WITNESSED WITH AT LEAST TWO TEMPORARY POINTS. TEMPORARY WITNESS POINTS SHALL BE MAINTAINED AND PROTECTED BY THE CONTRACTOR DURING CONSTRUCTION. ORIGINAL MONUMENTS SHALL BE STORED BY THE CONTRACTOR DURING CONSTRUCTION AND RESTORED TO THEIR ORIGINAL LOCATION FOLLOWING CONSTRUCTION.
8	NO SLAG AGGREGATE PRODUCTS SHALL BE USED ON THIS PROJECT.
9	NO EQUIPMENT SHALL BE STAGED ON THE LEVEE OVERNIGHT. FULL ACCESS IS NECESSARY FOR FLOOD FIGHTING ACTIVITIES.
10	WORK SHALL ONLY BE PERFORMED IN AREAS IDENTIFIED NEAR THE LEVEE.
11	VISUAL MONITORING FOR ANY SIGNS OF DISTRESS ON THE LEVEE, ESPECIALLY DURING EXCAVATION, SHALL BE REPORTED TO THE FIELD ENGINEER.
12	THE LEVEL OF PROTECTION OF THE LEVEE IS AT ELEVATION 602.00 (NAVD 88)

NOTE: TOPOGRAPHIC DATA FOR INFORMATIONAL PURPOSES ONLY.



Little Calumet River Basin Development Commission

900 Ridge Road, Suite H
Munster, IN 46321

REVISION	DESCRIPTION	DATE

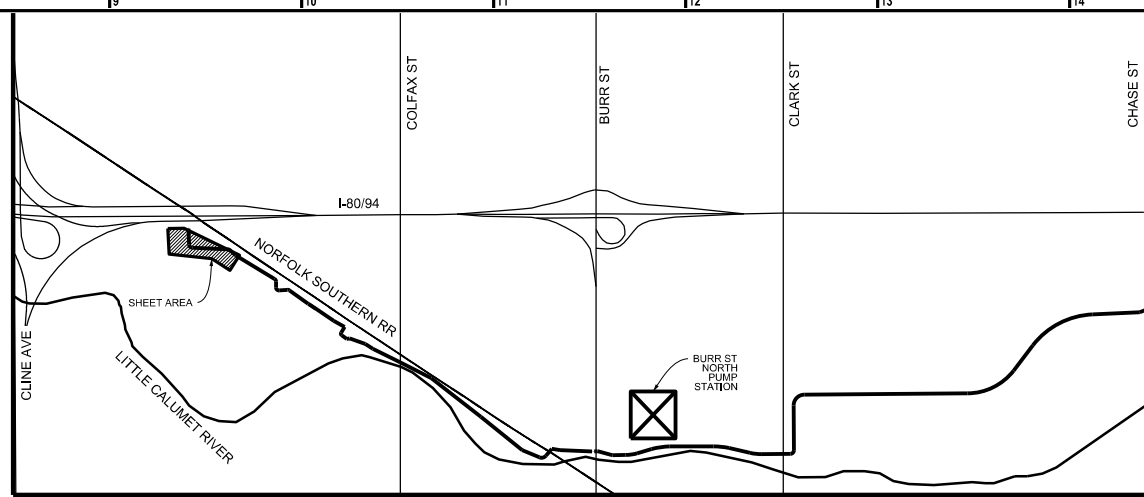
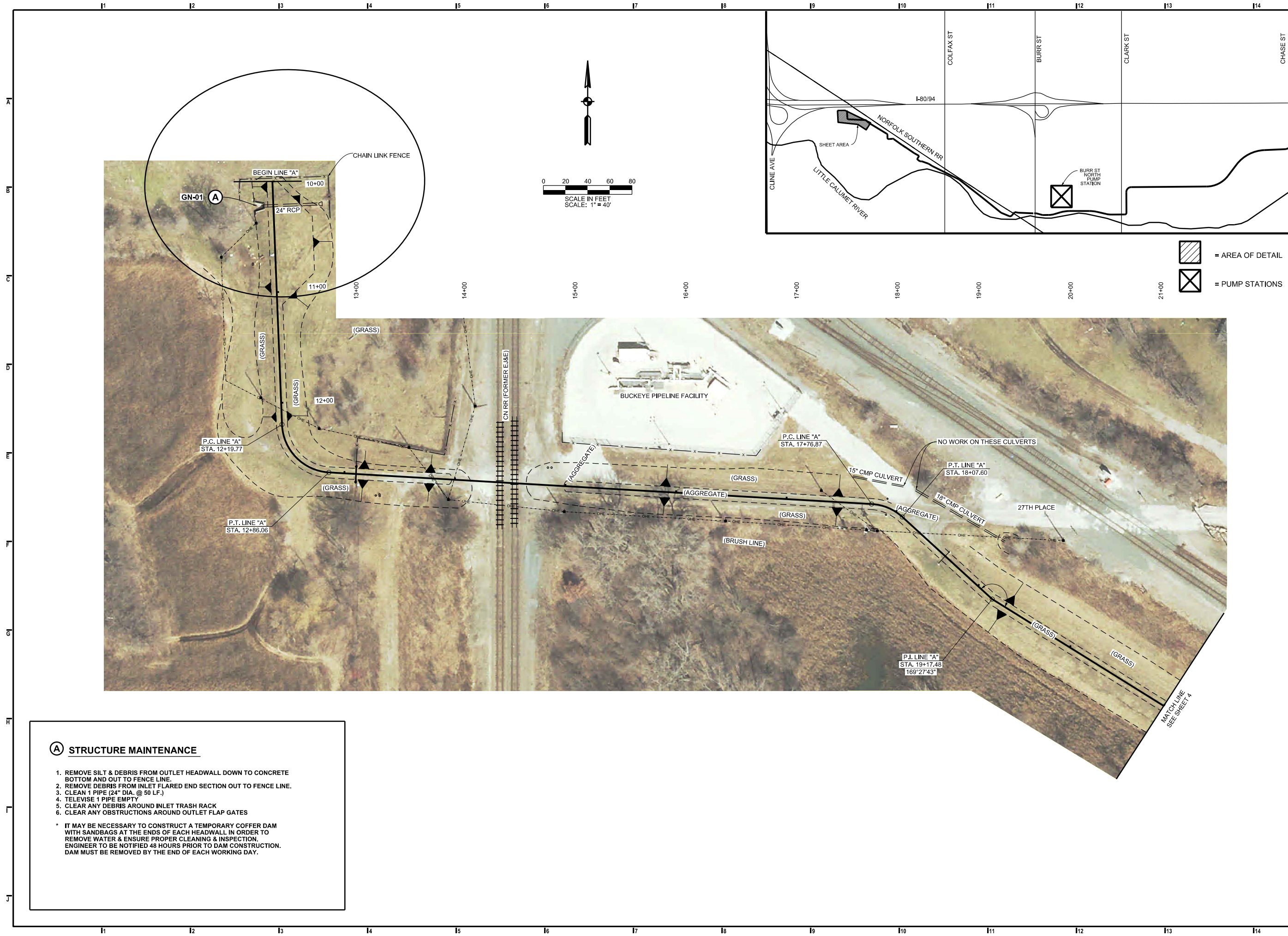
PRELIMINARY

Information Sheet

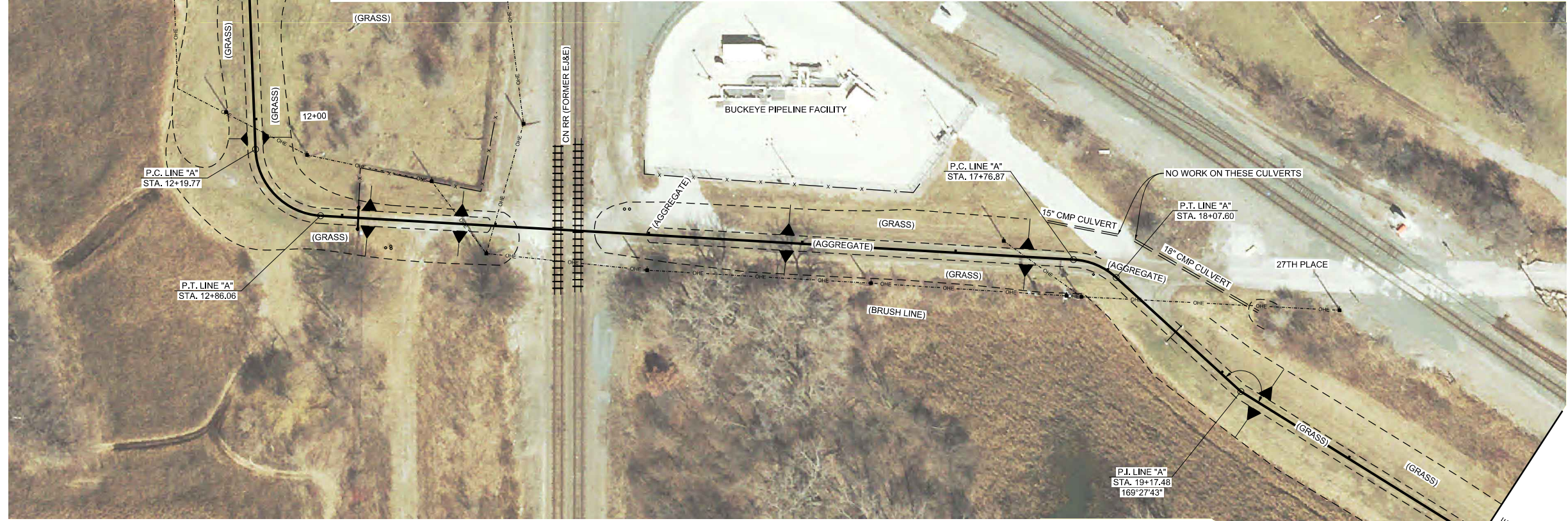
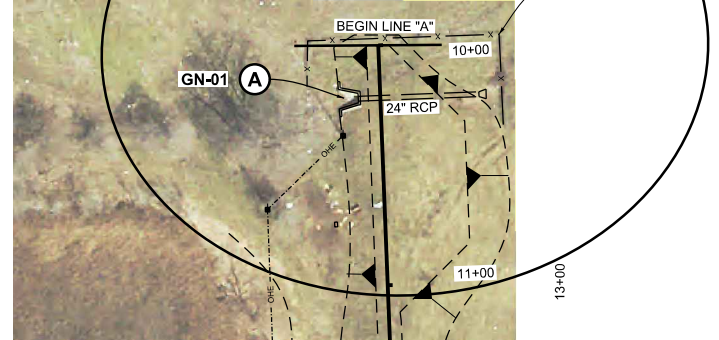
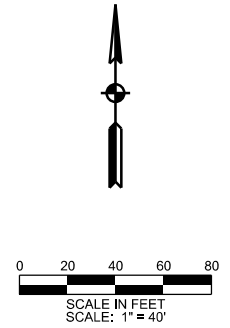
Gary North Levee Culvert Maintenance



Little Calumet River Basin Development Commission
 900 Ridge Road, Suite H
 Munster, IN 46321



- = AREA OF DETAIL
- = PUMP STATIONS



- (A) STRUCTURE MAINTENANCE**
1. REMOVE SILT & DEBRIS FROM OUTLET HEADWALL DOWN TO CONCRETE BOTTOM AND OUT TO FENCE LINE.
 2. REMOVE DEBRIS FROM INLET FLARED END SECTION OUT TO FENCE LINE.
 3. CLEAN 1 PIPE (24" DIA. @ 50 LF.)
 4. TELEWISE 1 PIPE EMPTY
 5. CLEAR ANY DEBRIS AROUND INLET TRASH RACK
 6. CLEAR ANY OBSTRUCTIONS AROUND OUTLET FLAP GATES
- * IT MAY BE NECESSARY TO CONSTRUCT A TEMPORARY COFFER DAM WITH SANDBAGS AT THE ENDS OF EACH HEADWALL IN ORDER TO REMOVE WATER & ENSURE PROPER CLEANING & INSPECTION. ENGINEER TO BE NOTIFIED 48 HOURS PRIOR TO DAM CONSTRUCTION. DAM MUST BE REMOVED BY THE END OF EACH WORKING DAY.

REVISION	DESCRIPTION	DATE

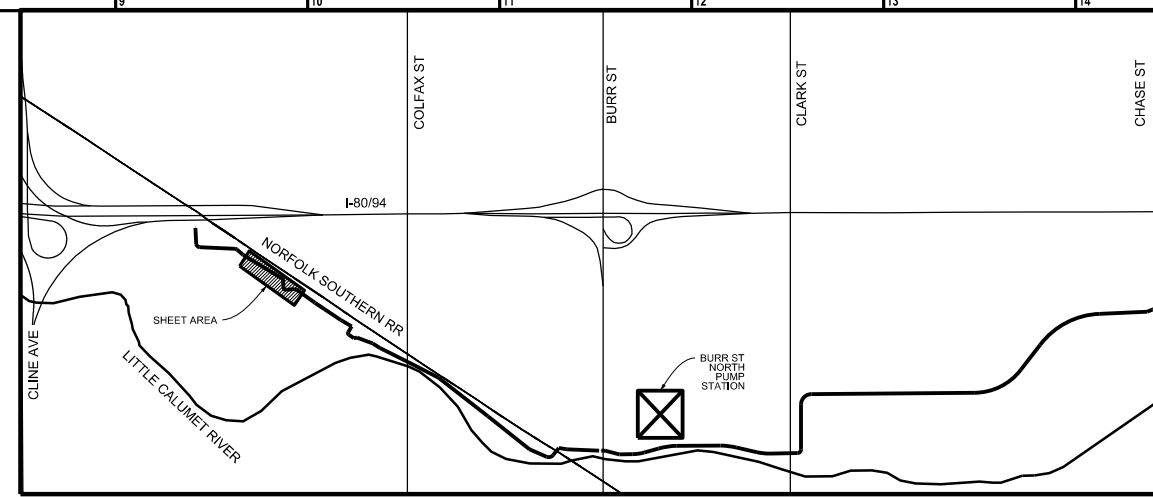
PRELIMINARY



Existing Levee
 Sta. 10+00 to 21+00 Line "A"
**Gary North Levee
 Culvert Maintenance**

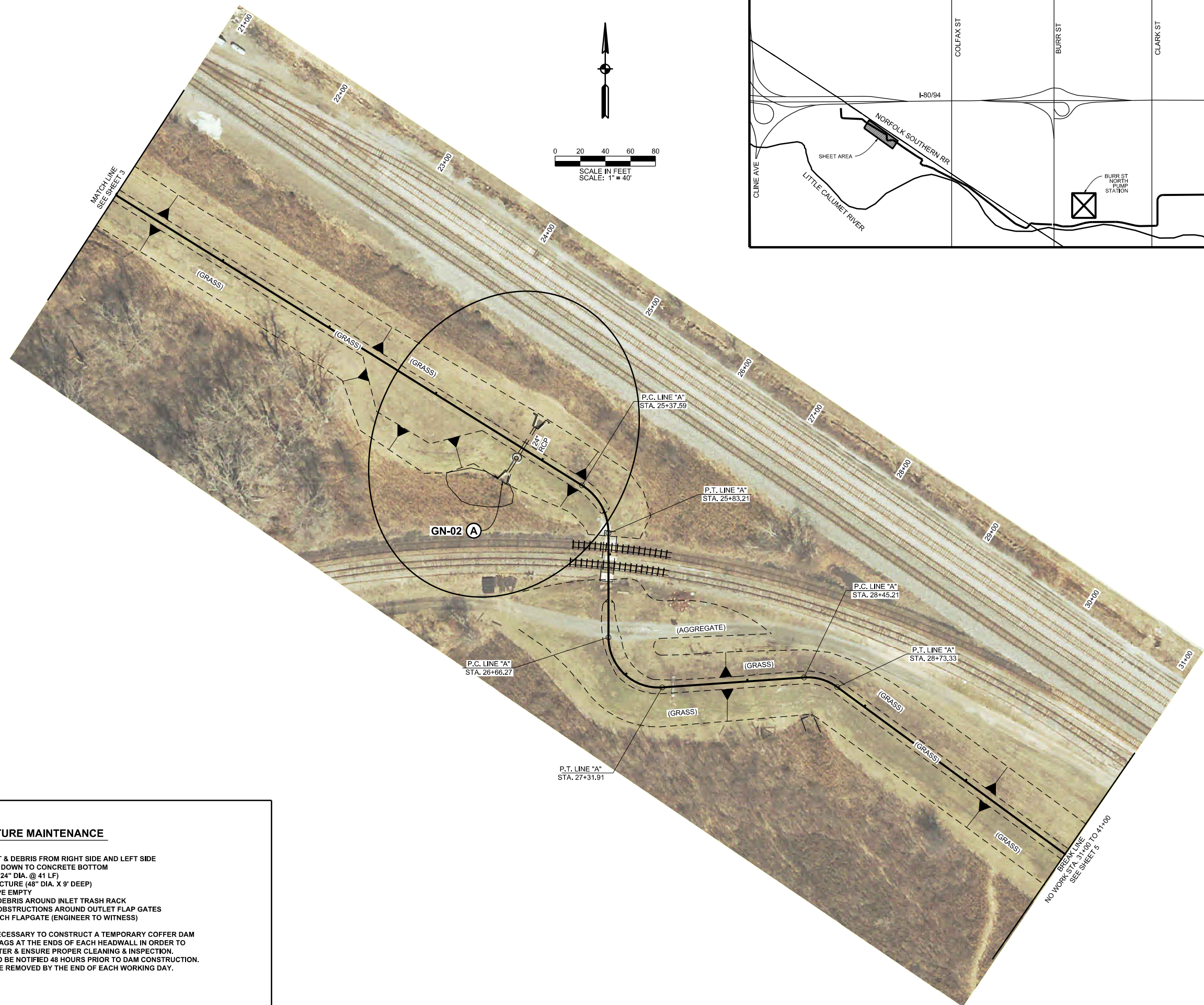
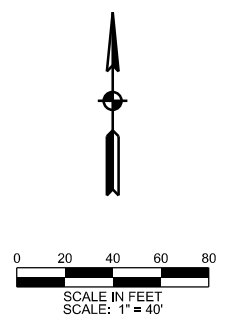


Little Calumet River Basin Development Commission

900 Ridge Road, Suite H
Munster, IN 46321



-  = AREA OF DETAIL
-  = PUMP STATIONS



- (A) STRUCTURE MAINTENANCE**
1. REMOVE SILT & DEBRIS FROM RIGHT SIDE AND LEFT SIDE HEADWALLS DOWN TO CONCRETE BOTTOM
 2. CLEAN PIPE (24" DIA. @ 41 LF)
 3. CLEAN STRUCTURE (48" DIA. X 9' DEEP)
 4. TELEWISE PIPE EMPTY
 5. CLEAR ANY DEBRIS AROUND INLET TRASH RACK
 6. CLEAR ANY OBSTRUCTIONS AROUND OUTLET FLAP GATES
 7. OPERATE EACH FLAPGATE (ENGINEER TO WITNESS)
- * IT MAY BE NECESSARY TO CONSTRUCT A TEMPORARY COFFER DAM WITH SANDBAGS AT THE ENDS OF EACH HEADWALL IN ORDER TO REMOVE WATER & ENSURE PROPER CLEANING & INSPECTION. ENGINEER TO BE NOTIFIED 48 HOURS PRIOR TO DAM CONSTRUCTION. DAM MUST BE REMOVED BY THE END OF EACH WORKING DAY.

REVISION	DESCRIPTION	DATE

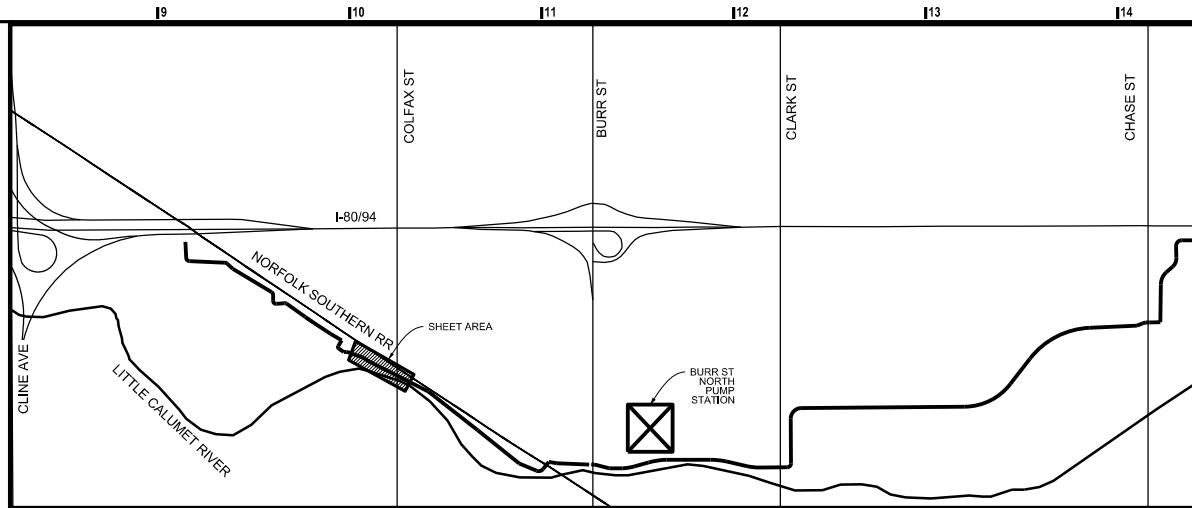
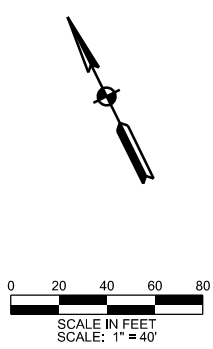
PRELIMINARY

Existing Levee
Sta. 21+00 to 31+00 Line "A"

Gary North Levee Culvert Maintenance

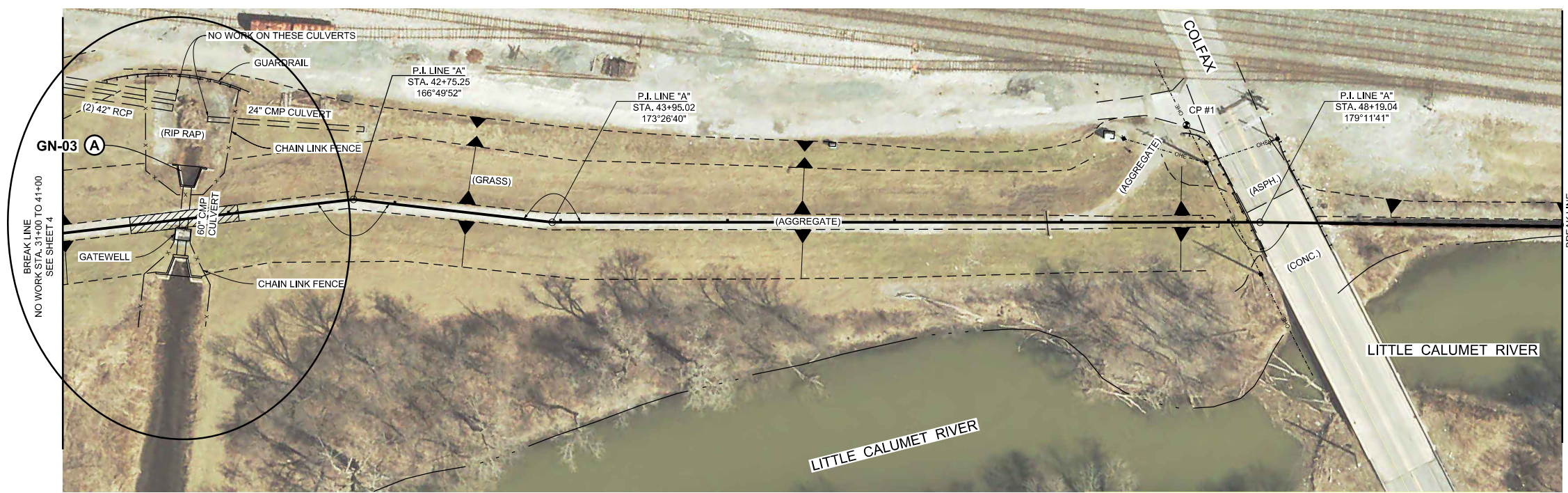


Little Calumet River Basin Development Commission
 900 Ridge Road, Suite H
 Munster, IN 46321



- = AREA OF DETAIL
- = PUMP STATIONS
- CP1: N: 1480582.937
E: 409740.691
ELEV: 600.21 NAVD88
- DESCRIPTION:
MAG NAIL

41+00 42+00 43+00 44+00 45+00 46+00 47+00 48+00 49+00 50+00



- (A) STRUCTURE MAINTENANCE**
1. REMOVE SILT & DEBRIS FROM RIGHT SIDE AND LEFT SIDE HEADWALLS DOWN TO CONCRETE BOTTOM
 2. CLEAN PIPE (60" DIA. @ 41 LF)
 3. CLEAN GATEWELL (9' X 7' X 14' DEEP)
 4. TELEWISE PIPE EMPTY
 5. CLEAR ANY DEBRIS AROUND INLET TRASH RACK
 6. CLEAR ANY OBSTRUCTIONS AROUND OUTLET FLAP GATES
 7. OPERATE EACH FLAPGATE (ENGINEER TO WITNESS)
- * IT MAY BE NECESSARY TO CONSTRUCT A TEMPORARY COFFER DAM WITH SANDBAGS AT THE ENDS OF EACH HEADWALL IN ORDER TO REMOVE WATER & ENSURE PROPER CLEANING & INSPECTION. ENGINEER TO BE NOTIFIED 48 HOURS PRIOR TO DAM CONSTRUCTION. DAM MUST BE REMOVED BY THE END OF EACH WORKING DAY.

REVISION	DESCRIPTION	DATE

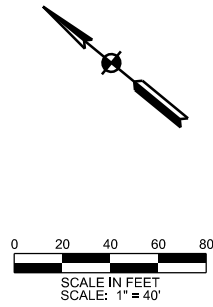
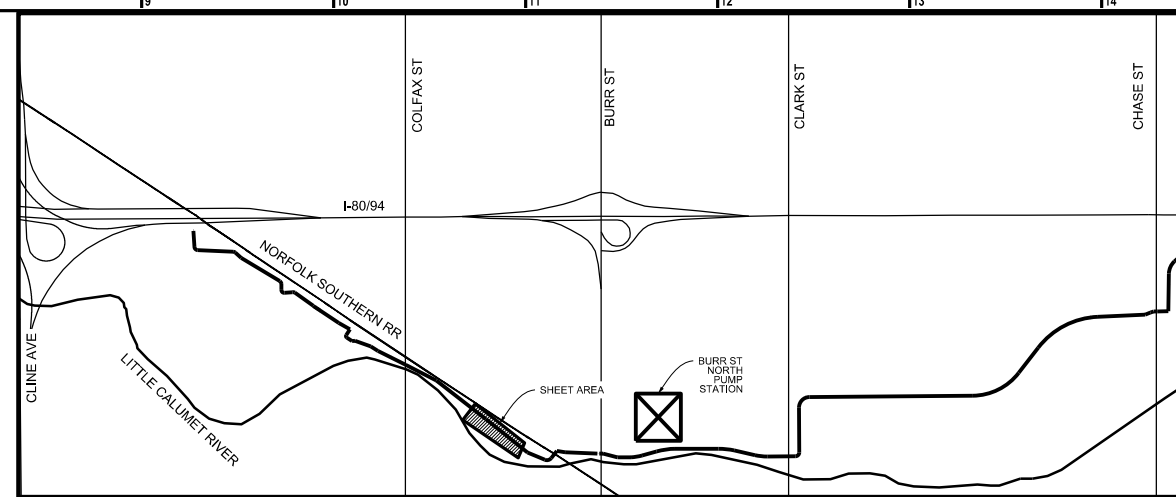
PRELIMINARY

Existing Levee
 Sta. 41+00 to 50+00 Line "A"
Gary North Levee Culvert Maintenance



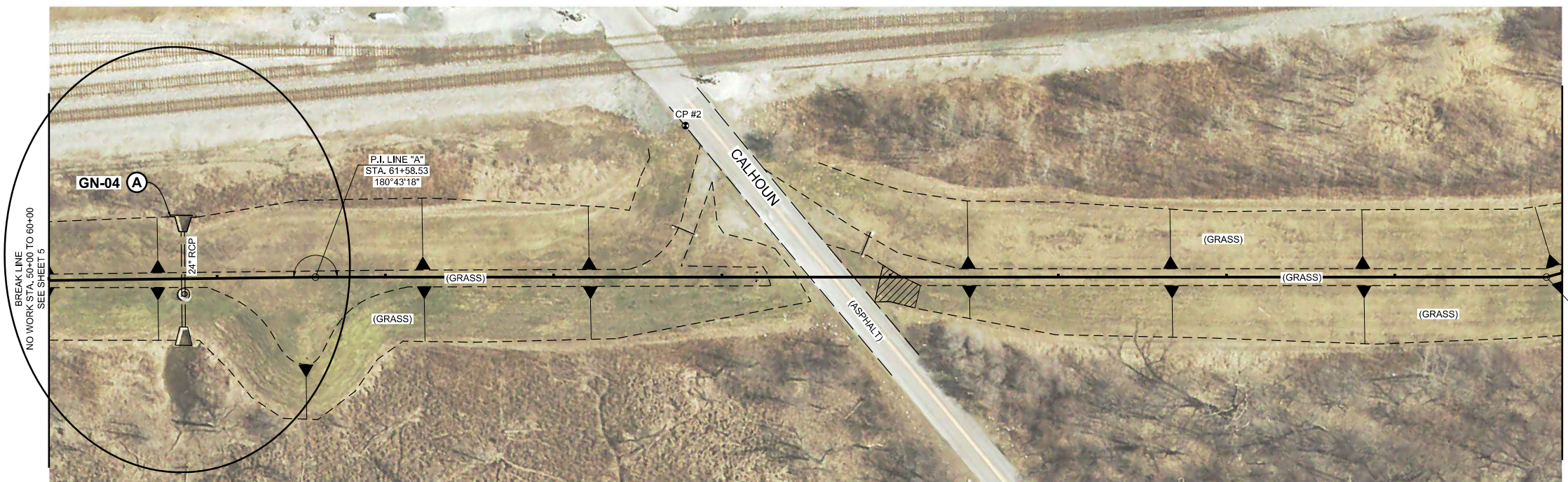
Little Calumet River Basin Development Commission

900 Ridge Road, Suite H
Munster, IN 46321



- = AREA OF DETAIL
- = PUMP STATIONS
- CP2: N: 1479678.022
E: 411074.907
ELEV: 600.48 NAVD88
- DESCRIPTION:
MAG NAIL

60+00 61+00 62+00 63+00 64+00 65+00 66+00 67+00 68+00 69+00



BREAK LINE
NO WORK STA. 50+00 TO 60+00
SEE SHEET 5

MATCH LINE
SEE SHEET 7

P.T. LINE "A"
STA. 68+90.30

REVISION	DESCRIPTION	DATE

- (A) STRUCTURE MAINTENANCE**
1. REMOVE SILT & DEBRIS FROM RIGHT SIDE AND LEFT SIDE HEADWALLS DOWN TO CONCRETE BOTTOM
 2. CLEAN PIPE (24" DIA. @ 56 LF)
 3. CLEAN STRUCTURE (48" DIA. X 13' DEEP)
 4. TELEWISE PIPE EMPTY
 5. CLEAR ANY DEBRIS AROUND INLET TRASH RACK
 6. CLEAR ANY OBSTRUCTIONS AROUND OUTLET FLAP GATES
 7. OPERATE EACH FLAPGATE (ENGINEER TO WITNESS)
- * IT MAY BE NECESSARY TO CONSTRUCT A TEMPORARY COFFER DAM WITH SANDBAGS AT THE ENDS OF EACH HEADWALL IN ORDER TO REMOVE WATER & ENSURE PROPER CLEANING & INSPECTION. ENGINEER TO BE NOTIFIED 48 HOURS PRIOR TO DAM CONSTRUCTION. DAM MUST BE REMOVED BY THE END OF EACH WORKING DAY.

PRELIMINARY

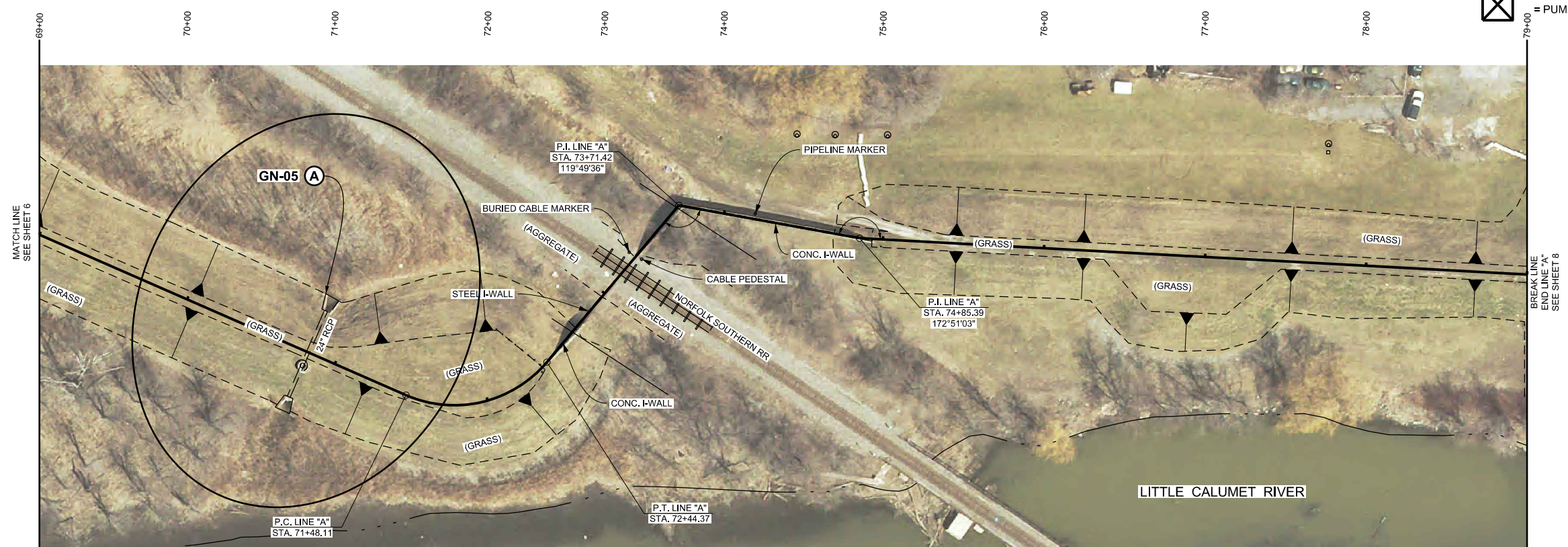
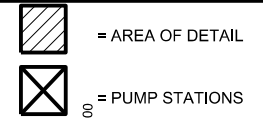
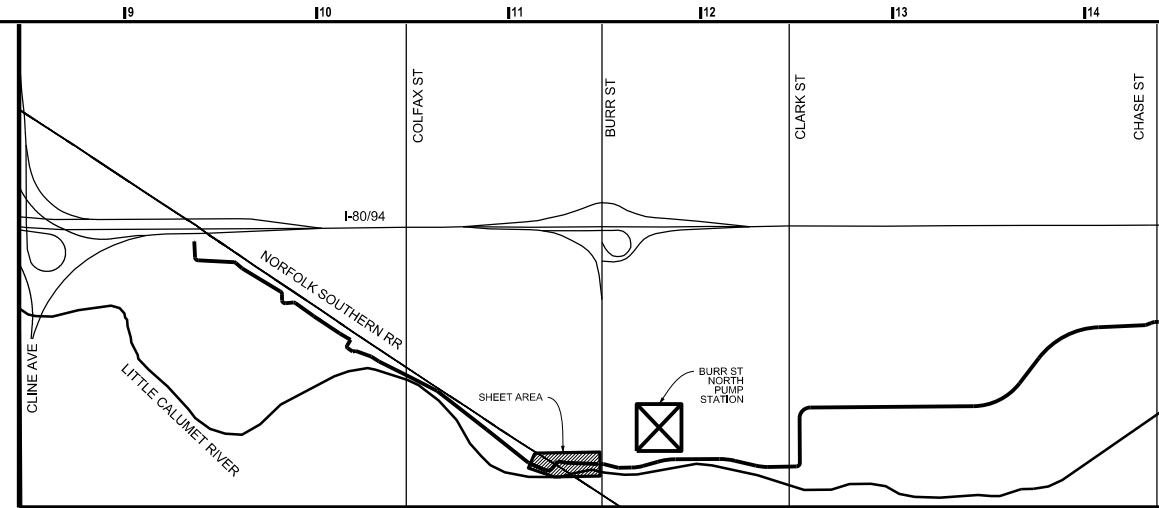
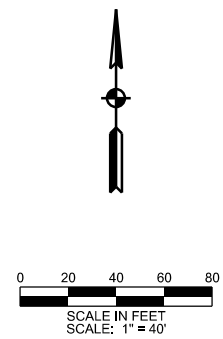
Existing Levee
Sta. 60+00 to 69+00 Line "A"

Gary North Levee Culvert Maintenance



Little Calumet River Basin Development Commission

900 Ridge Road, Suite H
Munster, IN 46321



REVISION	DESCRIPTION	DATE

(A) STRUCTURE MAINTENANCE

1. REMOVE SILT & DEBRIS FROM RIGHT SIDE AND LEFT SIDE HEADWALLS DOWN TO CONCRETE BOTTOM
2. CLEAN PIPE (24" DIA. @ 58 LF)
3. CLEAN STRUCTURE (48" DIA. X 14' DEEP)
4. TELEVISION PIPE EMPTY
5. CLEAR ANY DEBRIS AROUND INLET TRASH RACK
6. CLEAR ANY OBSTRUCTIONS AROUND OUTLET FLAP GATES
7. OPERATE EACH FLAPGATE (ENGINEER TO WITNESS)

* IT MAY BE NECESSARY TO CONSTRUCT A TEMPORARY COFFER DAM WITH SANDBAGS AT THE ENDS OF EACH HEADWALL IN ORDER TO REMOVE WATER & ENSURE PROPER CLEANING & INSPECTION. ENGINEER TO BE NOTIFIED 48 HOURS PRIOR TO DAM CONSTRUCTION. DAM MUST BE REMOVED BY THE END OF EACH WORKING DAY.

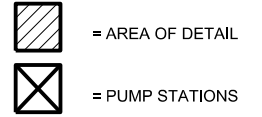
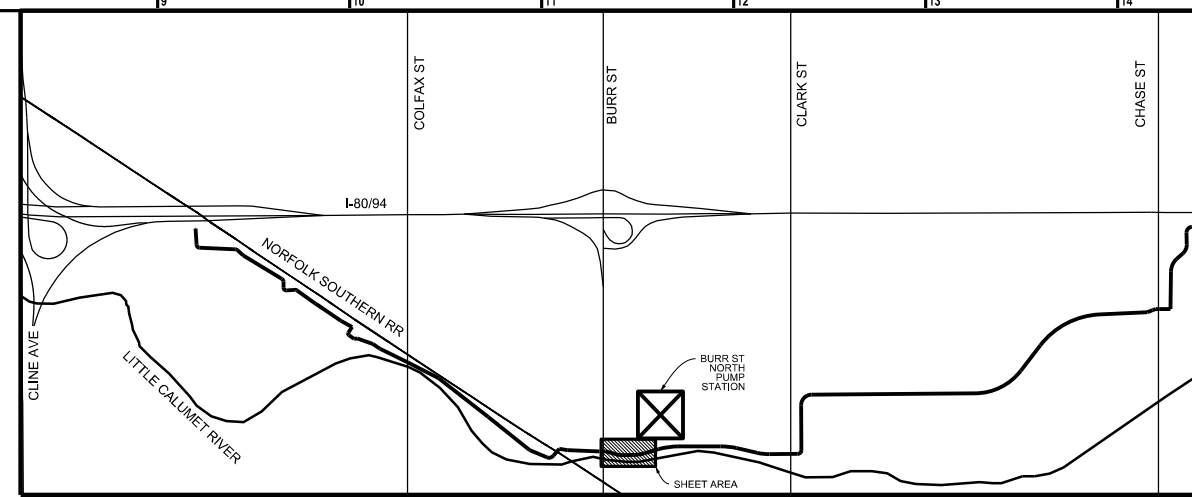
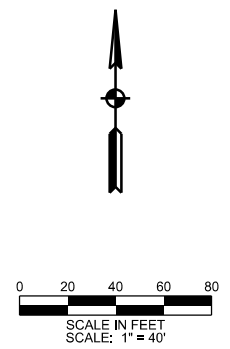
PRELIMINARY

Existing Levee
Sta. 69+00 to 79+00 Line "A"

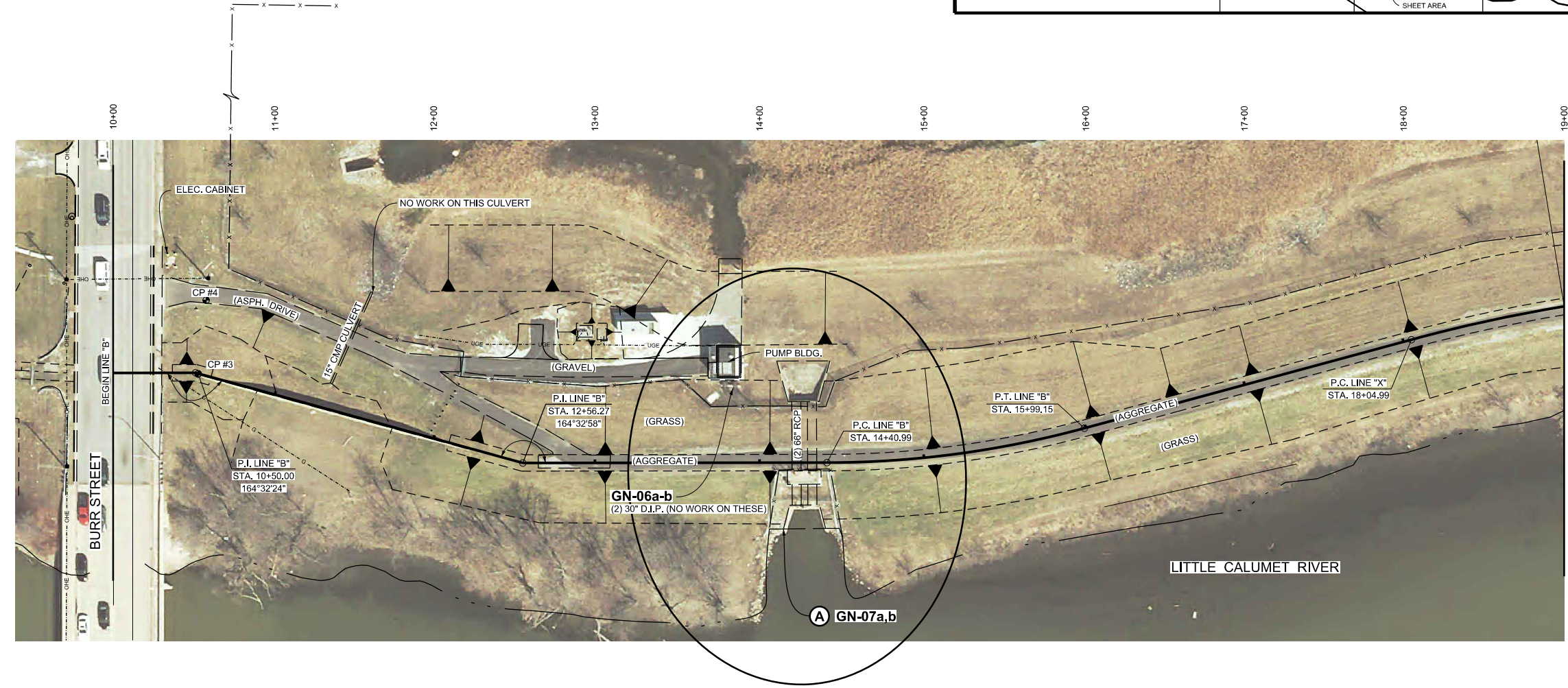
Gary North Levee Culvert Maintenance



Little Calumet River Basin Development Commission
 900 Ridge Road, Suite H
 Munster, IN 46321



- CP3: N: 1479252.830
E: 412452.146
ELEV: 603.63 NAVD88
DESCRIPTION: BRASS DISK
- CP4: N: 1479297.614
E: 412456.991
ELEV: 600.81 NAVD88
DESCRIPTION: MAG NAIL



BREAK LINE
NO WORK STA. 19+00 TO 91+00
SEE SHEET 9

REVISION	DESCRIPTION	DATE

(A) STRUCTURE MAINTENANCE

1. REMOVE SILT & DEBRIS FROM RIGHT SIDE AND LEFT SIDE HEADWALLS DOWN TO CONCRETE BOTTOM
2. CLEAN (2) PIPES (66" DIA. @ 63 LF)
3. CLEAN GATEWELL (25' X 5' X 13' DEEP)
4. TELEWISE (2) PIPES EMPTY
5. CLEAR ANY DEBRIS AROUND INLET TRASH RACK

* IT MAY BE NECESSARY TO CONSTRUCT A TEMPORARY COFFER DAM WITH SANDBAGS AT THE ENDS OF EACH HEADWALL IN ORDER TO REMOVE WATER & ENSURE PROPER CLEANING & INSPECTION. ENGINEER TO BE NOTIFIED 48 HOURS PRIOR TO DAM CONSTRUCTION. DAM MUST BE REMOVED BY THE END OF EACH WORKING DAY.

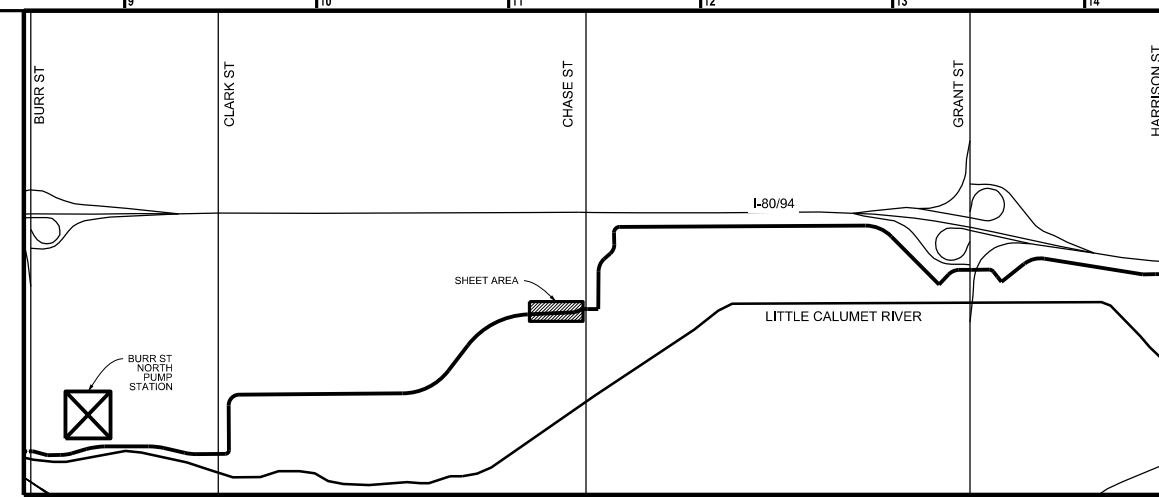
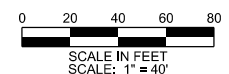
PRELIMINARY

Existing Levee
 Sta. 10+00 to 19+00 Line "B"
Gary North Levee Culvert Maintenance

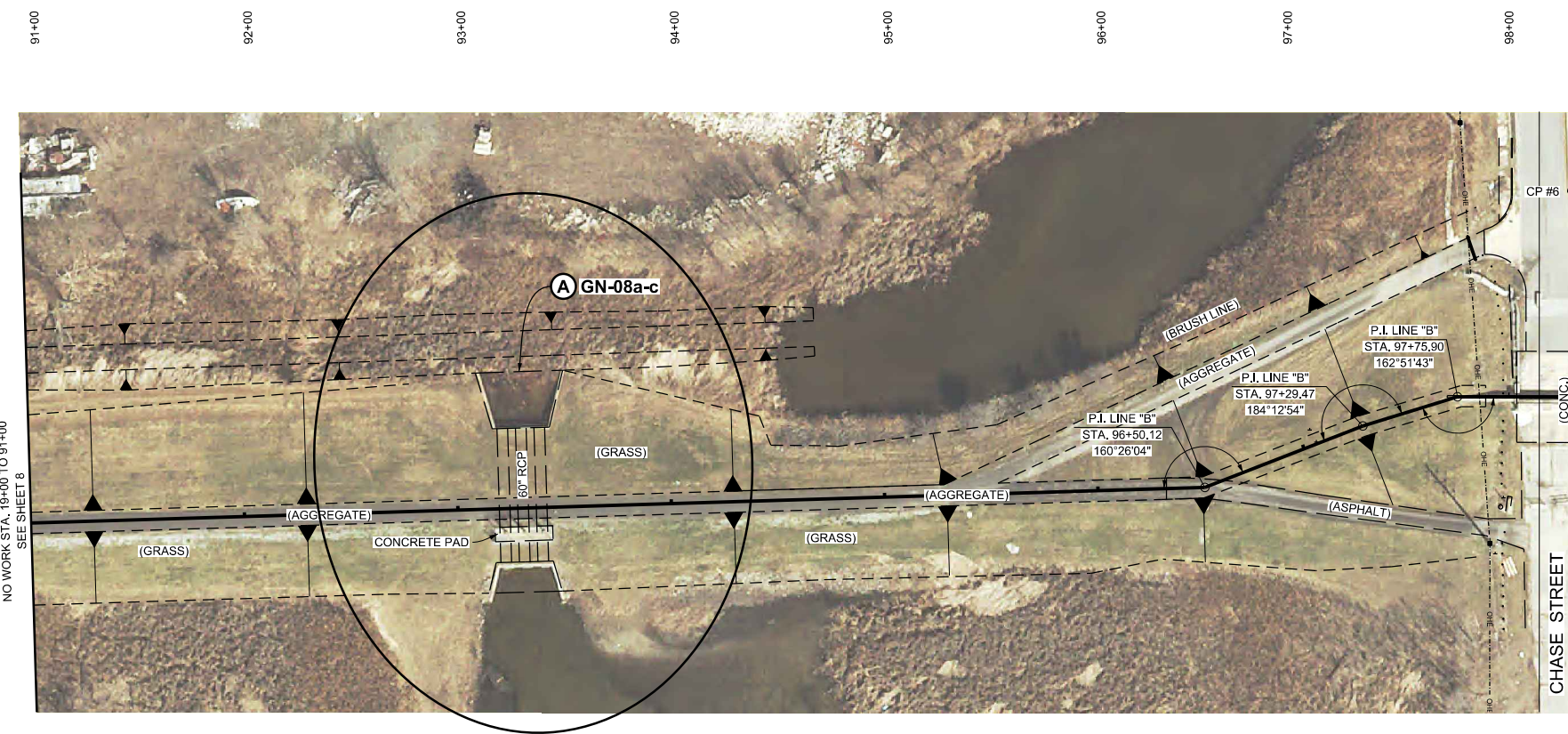


Little Calumet River Basin Development Commission

900 Ridge Road, Suite H
Munster, IN 46321



- = AREA OF DETAIL
- = PUMP STATIONS
- CP6: N: 1481205.611
E: 420100.746
ELEV: 595.25 NAVD88
- DESCRIPTION:
MAG NAIL



- (A) STRUCTURE MAINTENANCE**
1. REMOVE SILT & DEBRIS FROM RIGHT SIDE AND LEFT SIDE HEADWALLS DOWN TO CONCRETE BOTTOM
 2. CLEAN (3) PIPES (60" DIA. @ 63 LF)
 3. CLEAN GATEWELL (25' X 5' X 13' DEEP)
 4. TELEWISE (3) PIPES EMPTY
 5. CLEAR ANY DEBRIS AROUND INLET TRASH RACK
 6. CLEAR ANY OBSTRUCTIONS AROUND OUTLET FLAP GATES
 7. OPERATE EACH FLAPGATE (ENGINEER TO WITNESS)
- * IT MAY BE NECESSARY TO CONSTRUCT A TEMPORARY COFFER DAM WITH SANDBAGS AT THE ENDS OF EACH HEADWALL IN ORDER TO REMOVE WATER & ENSURE PROPER CLEANING & INSPECTION. ENGINEER TO BE NOTIFIED 48 HOURS PRIOR TO DAM CONSTRUCTION. DAM MUST BE REMOVED BY THE END OF EACH WORKING DAY.

REVISION	DESCRIPTION	DATE

PRELIMINARY

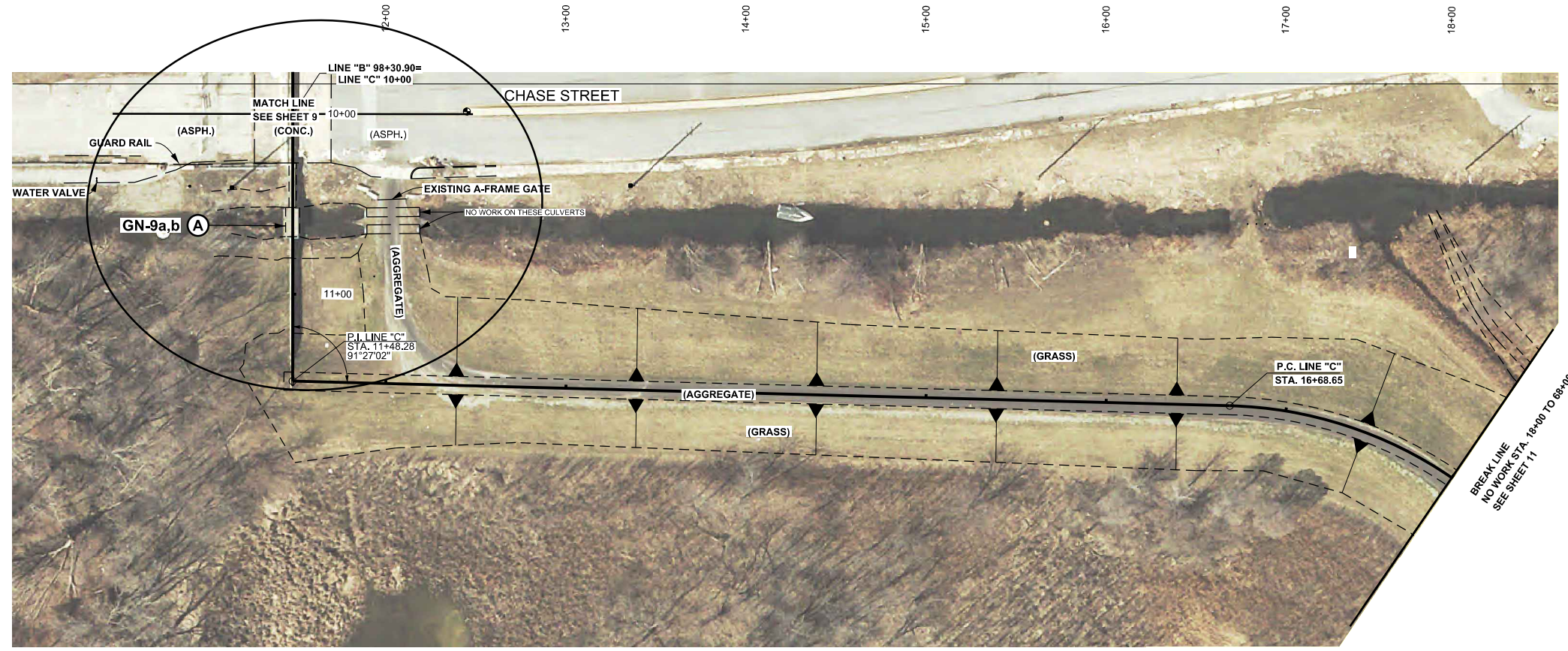
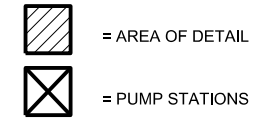
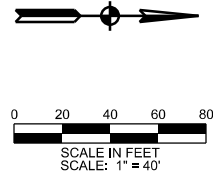
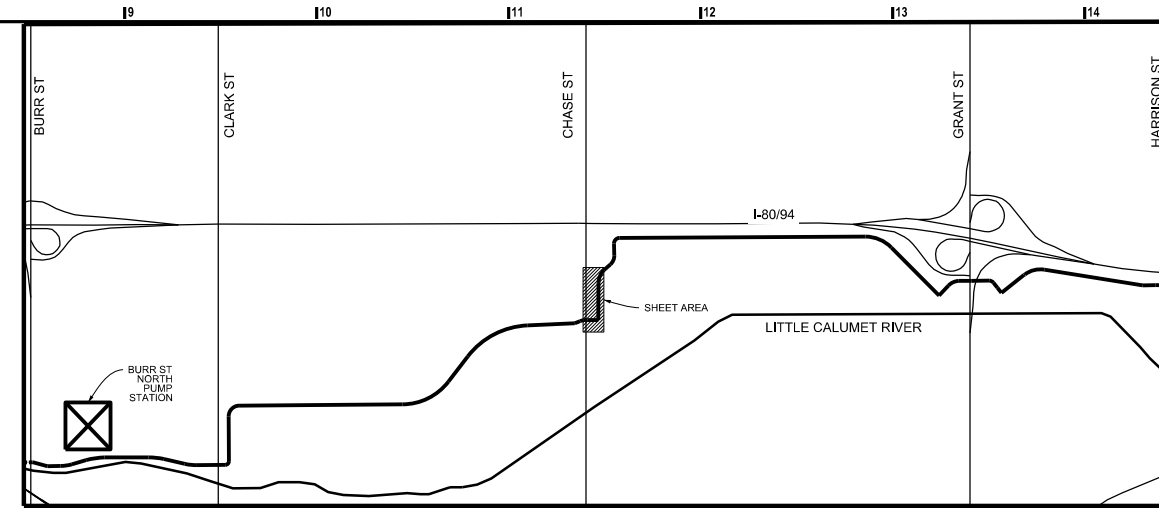
Existing Levee
Sta. 91+00 to 98+30 Line "B"

Gary North Levee Culvert Maintenance



Little Calumet River Basin Development Commission

900 Ridge Road, Suite H
Munster, IN 46321



(A) STRUCTURE MAINTENANCE

1. REMOVE SILT & DEBRIS FROM SLUICE GATE AND FLAPGATE
2. OPERATE EACH FLAPGATE (ENGINEER TO WITNESS)

REVISION	DESCRIPTION	DATE

PRELIMINARY

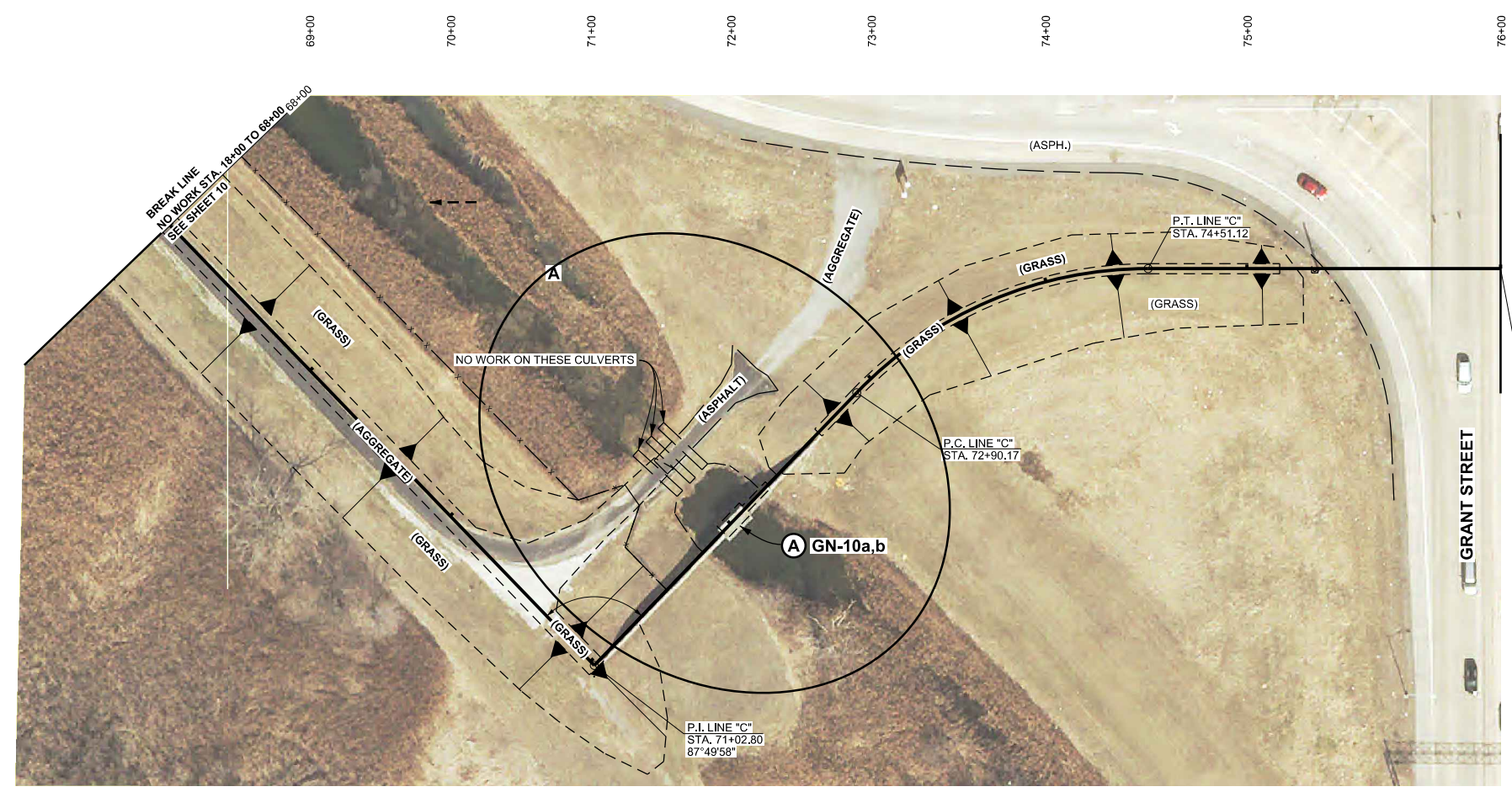
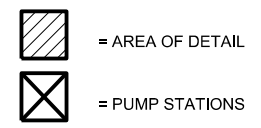
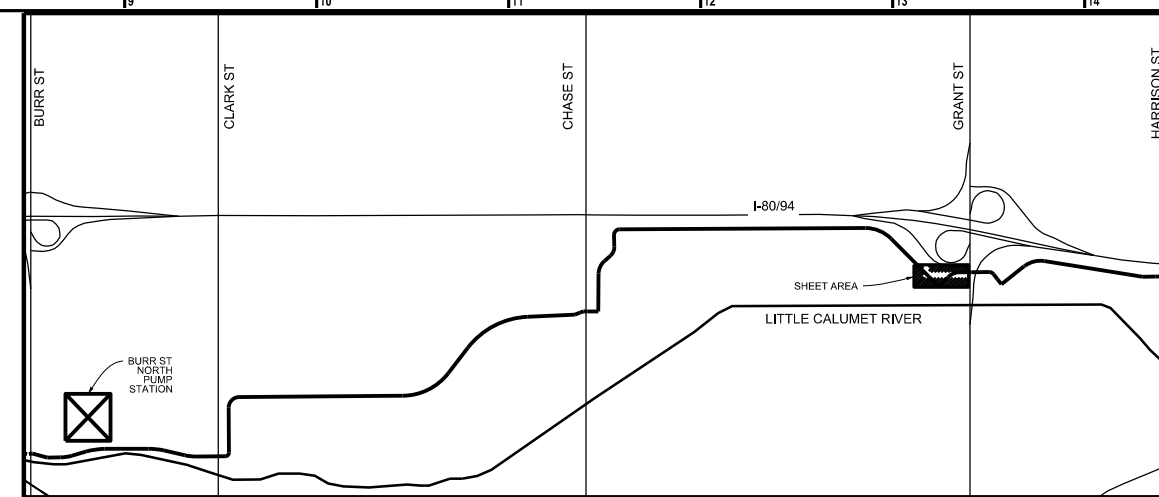
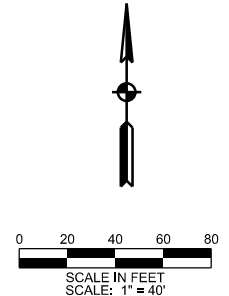
Existing Levee
Sta. 10+00 to 18+00 Line "C"

**Gary North Levee
Culvert Maintenance**



Little Calumet River Basin Development Commission

900 Ridge Road, Suite H
Munster, IN 46321



(A) STRUCTURE MAINTENANCE

1. REMOVE SILT & DEBRIS FROM SLUICE GATE AND FLAPGATE
2. OPERATE EACH FLAPGATE (ENGINEER TO WITNESS)

REVISION	DESCRIPTION	DATE

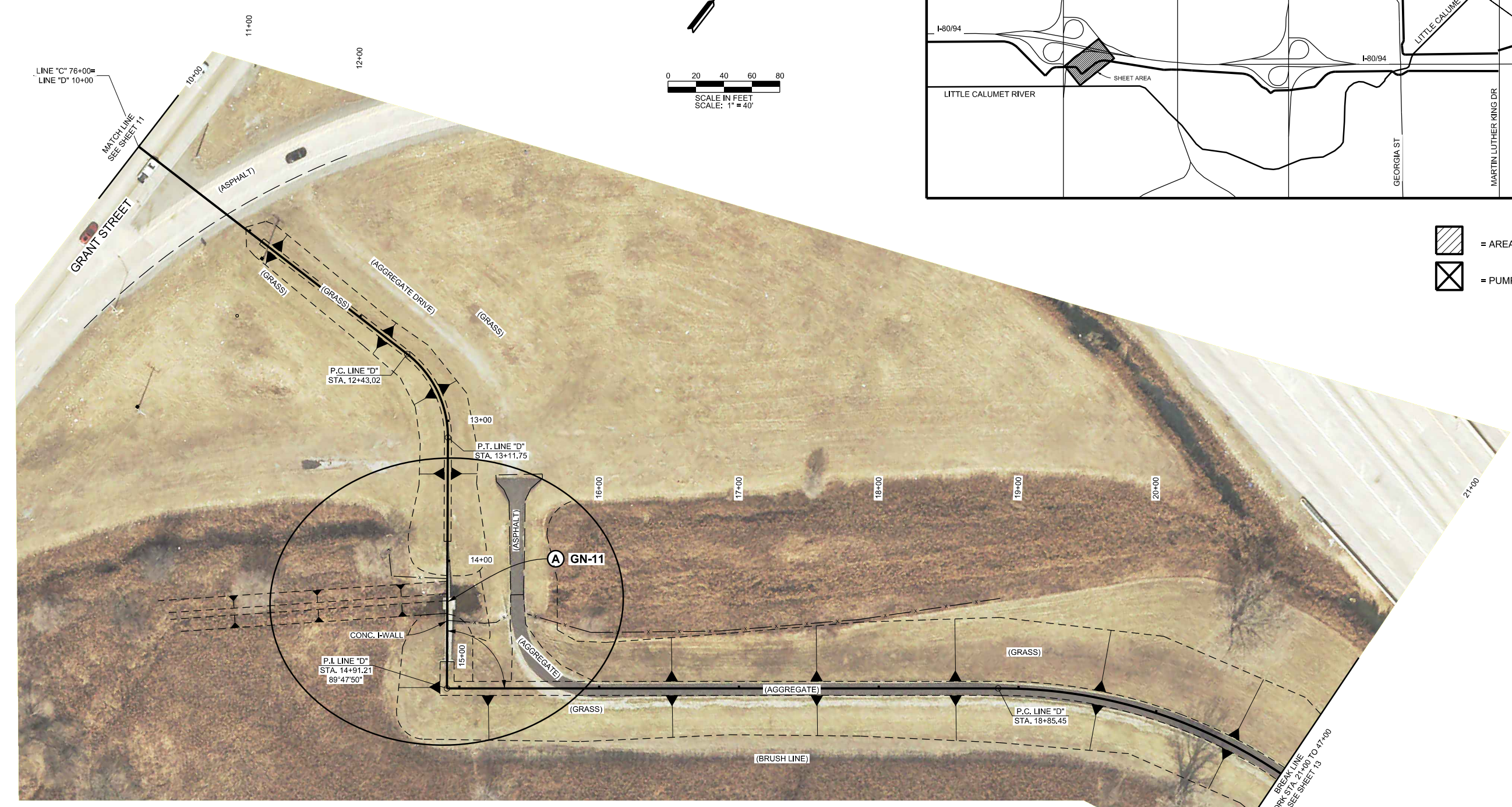
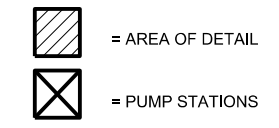
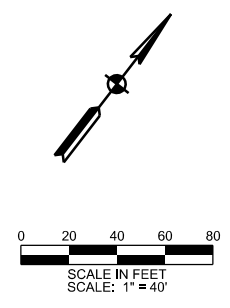
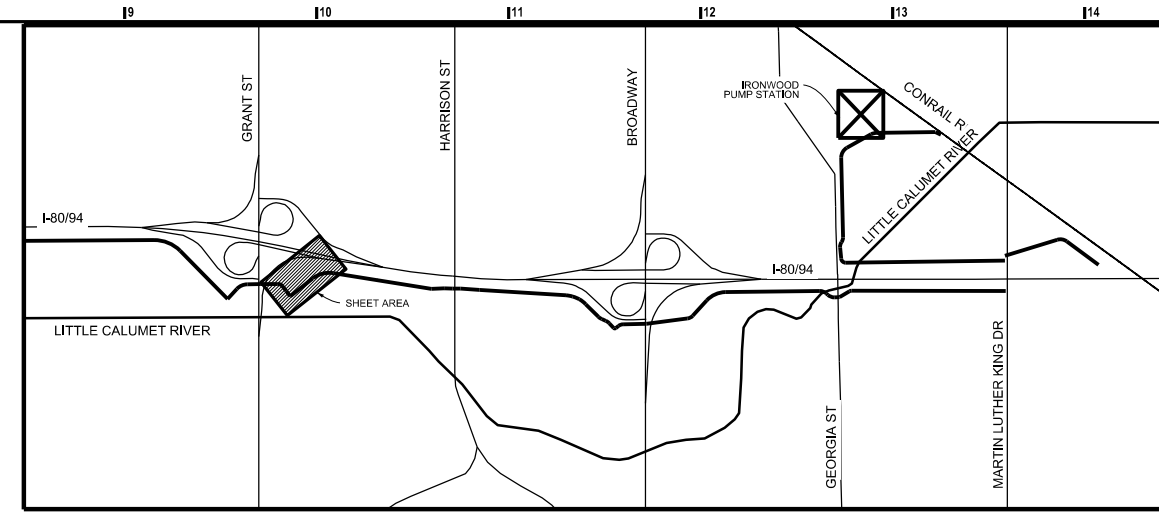
PRELIMINARY

Existing Levee
Sta. 68+00 to 76+00 Line "C"

**Gary North Levee
Culvert Maintenance**



Little Calumet River Basin Development Commission
 900 Ridge Road, Suite H
 Munster, IN 46321



(A) STRUCTURE MAINTENANCE

1. REMOVE SILT & DEBRIS FROM SLUICE GATE AND FLAPGATE
2. OPERATE EACH FLAPGATE (ENGINEER TO WITNESS)

REVISION	DESCRIPTION	DATE

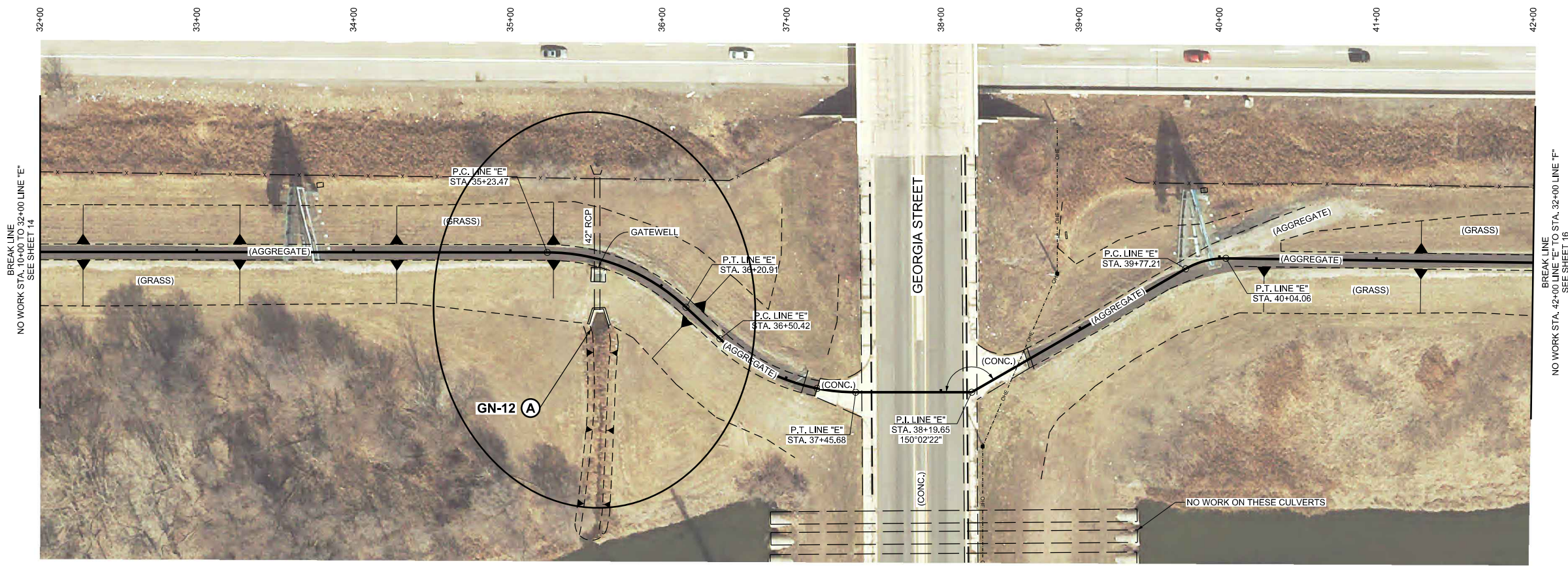
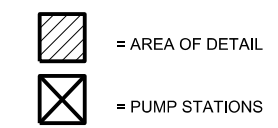
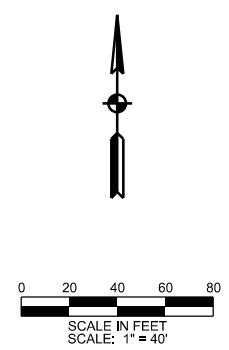
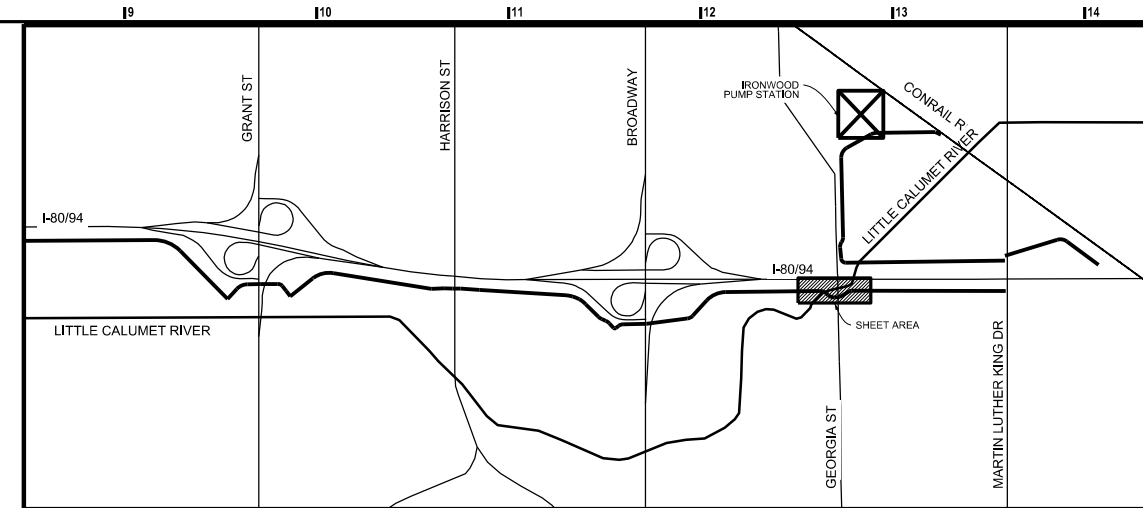
PRELIMINARY

Existing Levee
 Sta. 10+00 to 21+00 Line "D"
Gary North Levee Culvert Maintenance



Little Calumet River Basin Development Commission

900 Ridge Road, Suite H
Munster, IN 46321



(A) STRUCTURE MAINTENANCE

1. REMOVE SILT & DEBRIS FROM HEADWALL DOWN TO CONCRETE BOTTOM
2. CLEAN PIPE (42" DIA. @ 87 LF)
3. CLEAN GATEWELL (7' X 7' X 14' DEEP)
4. TELEWISE PIPE EMPTY
5. CLEAR ANY DEBRIS AROUND INLET TRASH RACK
6. CLEAR ANY OBSTRUCTIONS AROUND OUTLET FLAP GATES
7. OPERATE EACH FLAPGATE (ENGINEER TO WITNESS)

* IT MAY BE NECESSARY TO CONSTRUCT A TEMPORARY COFFER DAM WITH SANDBAGS AT THE ENDS OF EACH HEADWALL IN ORDER TO REMOVE WATER & ENSURE PROPER CLEANING & INSPECTION. ENGINEER TO BE NOTIFIED 48 HOURS PRIOR TO DAM CONSTRUCTION. DAM MUST BE REMOVED BY THE END OF EACH WORKING DAY.

REVISION	DESCRIPTION	DATE

PRELIMINARY

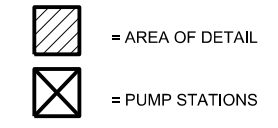
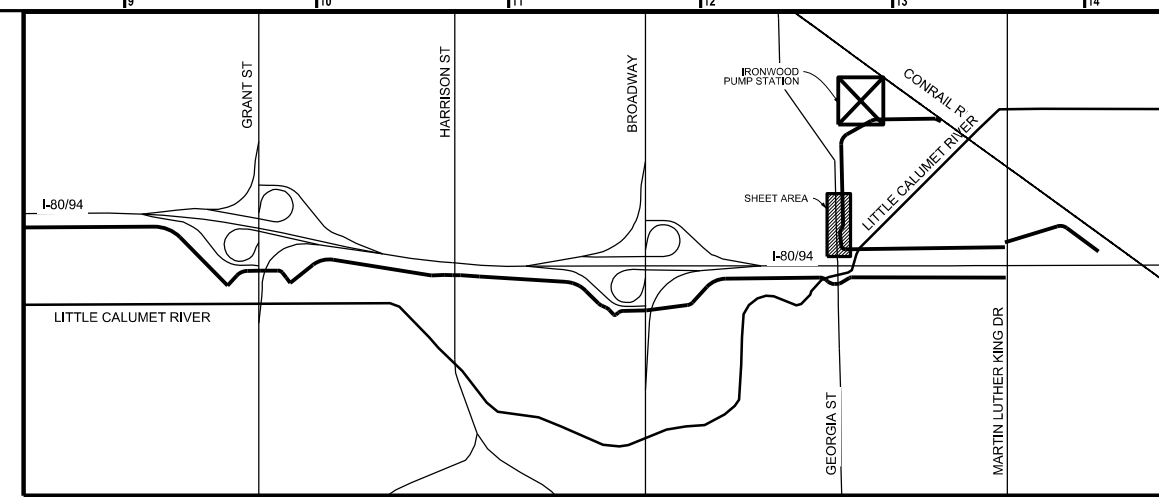
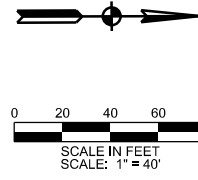
Existing Levee
Sta. 32+00 to 42+00 Line "E"

**Gary North Levee
Culvert Maintenance**



Little Calumet River Basin Development Commission

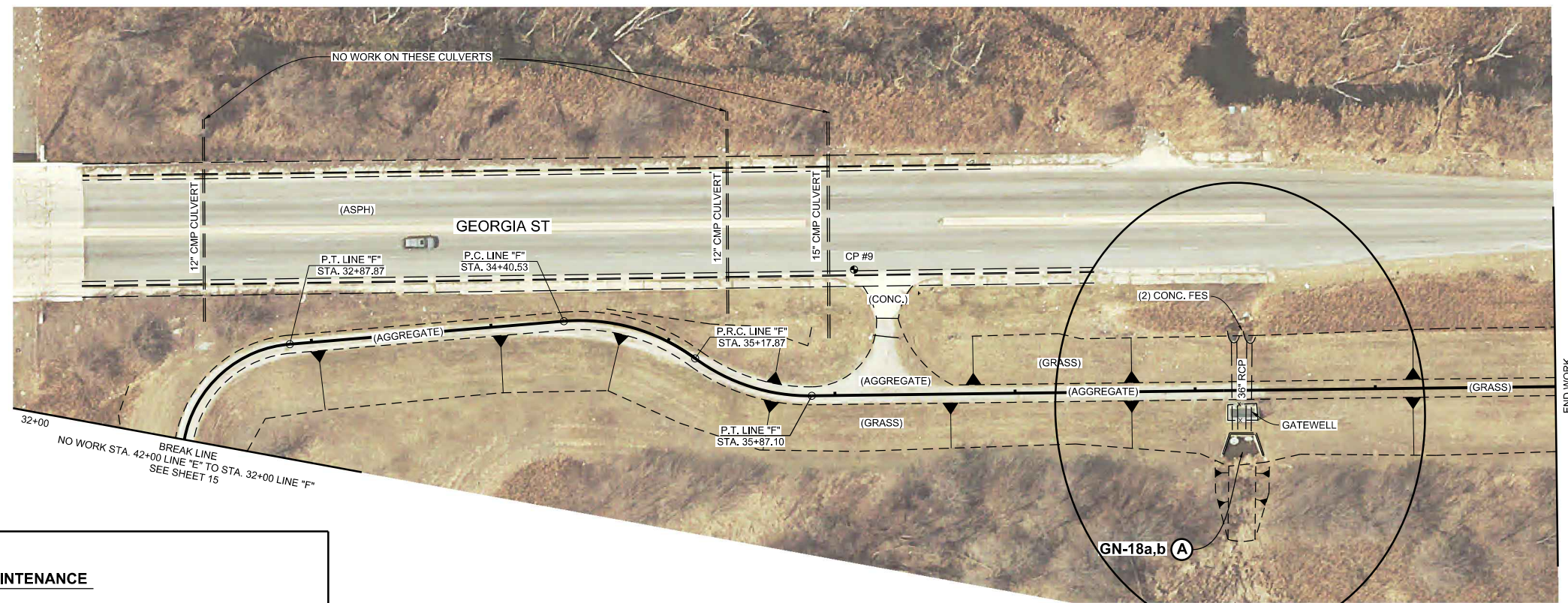
900 Ridge Road, Suite H
Munster, IN 46321



● CP9: N: 1482142.833
E: 433341.066
ELEV: 600.03 NAVD88

DESCRIPTION:
MAG NAIL

33+00 34+00 35+00 36+00 37+00 38+00 39+00 40+00



- (A) STRUCTURE MAINTENANCE**
1. REMOVE SILT & DEBRIS FROM BOTH HEADWALLS DOWN TO CONCRETE BOTTOM
 2. CLEAN (2) PIPES (36" DIA. @ 50 LF)
 3. CLEAN GATEWELLS (7' X 12' X 14' DEEP)
 4. TELEWISE (2) PIPES EMPTY
 5. CLEAR ANY DEBRIS AROUND INLET TRASH RACK
 6. CLEAR ANY OBSTRUCTIONS AROUND OUTLET FLAP GATES
 7. OPERATE EACH FLAPGATE (ENGINEER TO WITNESS)
- * IT MAY BE NECESSARY TO CONSTRUCT A TEMPORARY COFFER DAM WITH SANDBAGS AT THE ENDS OF EACH HEADWALL IN ORDER TO REMOVE WATER & ENSURE PROPER CLEANING & INSPECTION. ENGINEER TO BE NOTIFIED 48 HOURS PRIOR TO DAM CONSTRUCTION. DAM MUST BE REMOVED BY THE END OF EACH WORKING DAY.

REVISION	DESCRIPTION	DATE

PRELIMINARY

Existing Levee
Sta. 32+00 to 40+00 Line "F"

**Gary North Levee
Culvert Maintenance**